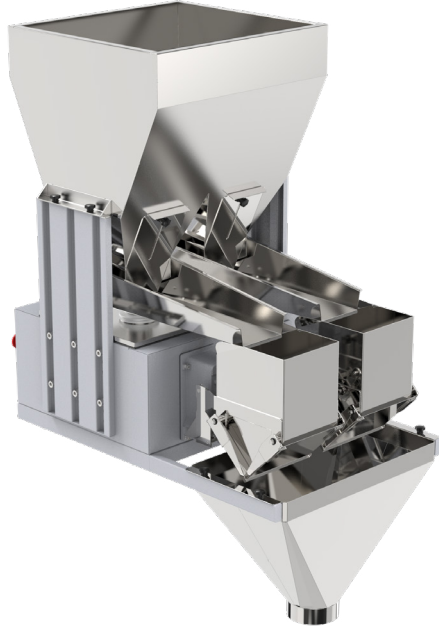


## SFS-CNL027.0L

2 Head 7 Litres (CN)

## Build to Weigh- Engineered to Last SINGLE VIBRATOR



### High-Precision Vibratory Feeding

Controlled vibration delivers a smooth, consistent flow of material for highly accurate weighing.

### Dynamic Feed Rate Adjustment

SmartFill auto adjusts vibration intensity on real time load cell feedback to optimize speed and accuracy.

### Multi-Stage Filling

Fast bulk feed transitions into fine and dribble feed for exact target weight achievement with minimal product giveaway.

### HMI Touchscreen Interface

User-friendly, multilingual interface for recipe management, real-time monitoring, and system control. Supports Various Industry 4.0 protocols for smart factory ecosystems.

### Material Flexibility

Capable of handling a wide variety of products like freeflowing granules, powders, small parts, and fragile items.

### Low Maintenance, Long Lifespan

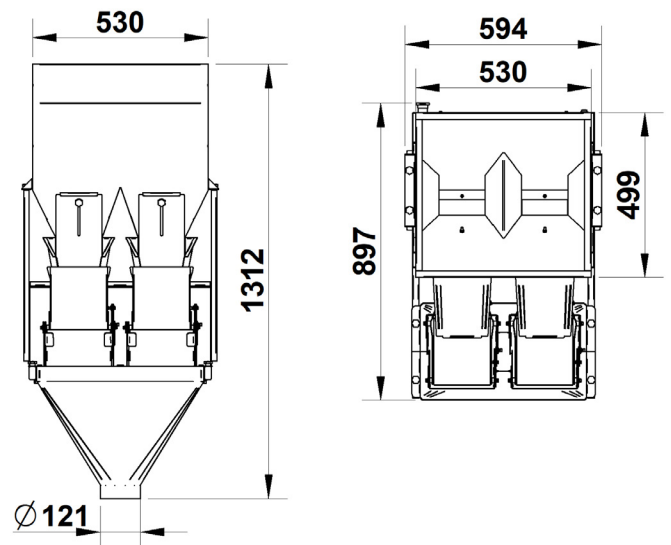
Solid-state vibratory feeders with minimal moving parts, designed for extended service intervals and reduced downtime.

|                                       |   |
|---------------------------------------|---|
| <b>Bucket Capacity</b>                | 7.0 liters  |
| <b>Feeding Hopper volume</b>          | 95 liters   |
| <b>Weighing Range*</b>                | 1000-5000 grams                                       |
| <b>Accuracy*</b>                      | +/- 5~10 grams  |
| <b>Production Output* (Speed)</b>     | 8-10 bags / minute                                    |
| <b>Operating Panel</b>                | Touchscreen HMI 7 Inches                              |
| <b>Power Supply</b>                   | AC 230V +/- 10%, 50/60 Hz                             |
| <b>No of Preset Programs</b>          | 100   |
| <b>Control System</b>                 | Embedded  |
| <b>Material Of Construction***</b>    | All contact parts SS-304. Body Parts MS Powder coated |
| <b>Machine Dimensions (L x W x H)</b> | 594 x 897 x 1312 mm                                   |
| <b>Machine Weight**</b>               | Approx 78 Kgs   |
| <b>Optional Accessories</b>           | Customized Structure, Funnel, Elevator, Belt Sealer   |
| <b>Optional Models</b>                | SFS-CNL047.0L<br>SFS-CNL0410.0L<br>SFS-CNL0410.0L     |

\*Depends on product shape, bulk density, target weight & feeding conditions etc.

\*\*The machine weight varies depending upon the options selected

\*\*\*Complete SS-304 and SS-316 are available on request



TECHNICAL INFORMATION IS BASED UPON INFORMATION AVAILABLE AS OF MAY-2025. CONFIRMATION IS PROVIDED BY SALES INQUIRY. PHOTOGRAPHS AND APPLICATION SHOTS MAY NOT BE EXACT REPRESENTATION

